

Supplemental Material for “An Organic Hydrogel as a Matrix for the Growth of Calcite Crystals.”

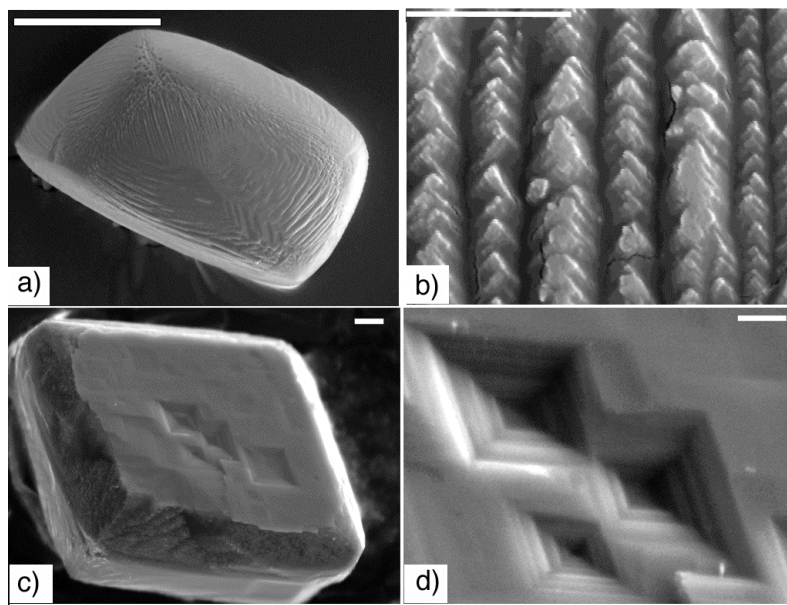


Figure S.1 Etching of control calcite crystals with EDTA a) Control calcite crystal (3 hours, 12 mM EDTA in 50 mM Tris) (scale bar: 100 μm), b) A high magnification image of the crystal surface, near the corner shown in a) (scale bar: 5 μm), c) Control calcite crystal (3 hours, 3 mM EDTA in 50 mM Tris) (scale bar: 5 μm) and d) A high magnification image of the geometrical etch pits on the surface of the crystal in c) (scale bar: 2 μm).